

Skin cancers and neoplasms mimicking chronic wounds

Falko Schubert

Dermatologist

CCDHB, NMDHB, Wellington Dermatology



Chronic wounds: Cause

- Trauma:** injury, burns, pressure sore
- Diabetes**
- Venous insufficiency**
- Peripheral arterial disease**
- Hereditary conditions:** Epidermolysis bullosa, clotting/haemostasis disorders
- chronic inflammatory conditions:** Crohn's disease, Pyoderma gangraenosum, Rheumatoid arthritis, Vasculitis'

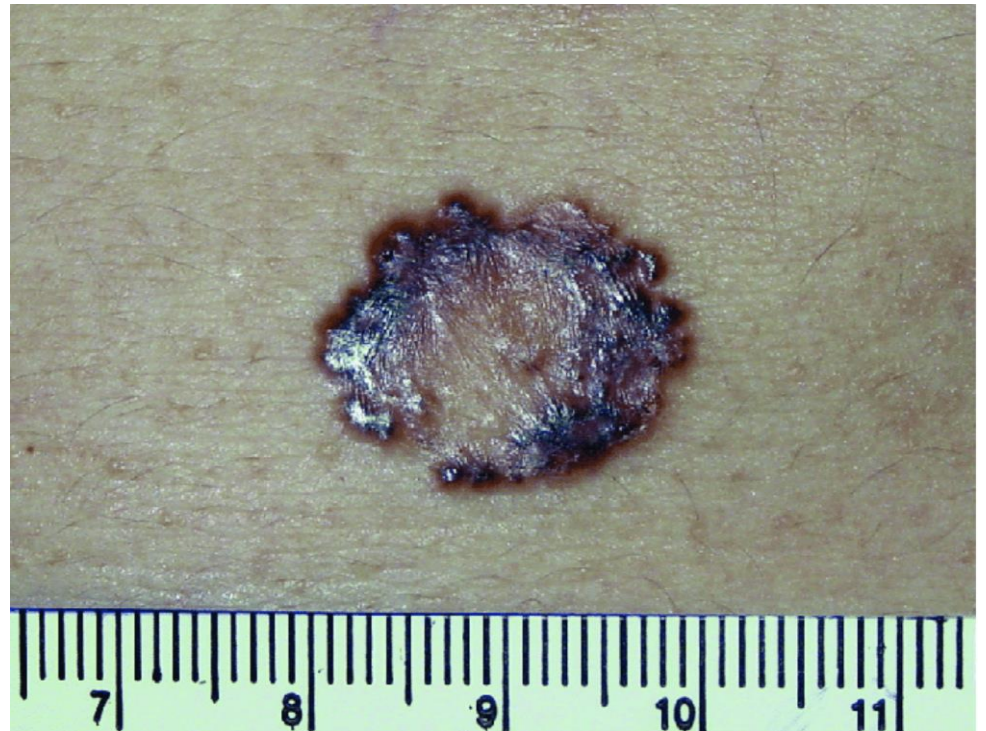
Types of Skin cancers:

1. Melanoma

- Superficial spreading melanoma
- Nodular melanoma
- Acro-lentiginous melanoma
- Amelanotic melanoma
- Lentigo maligna melanoma
- Ocular/anorectal melanoma

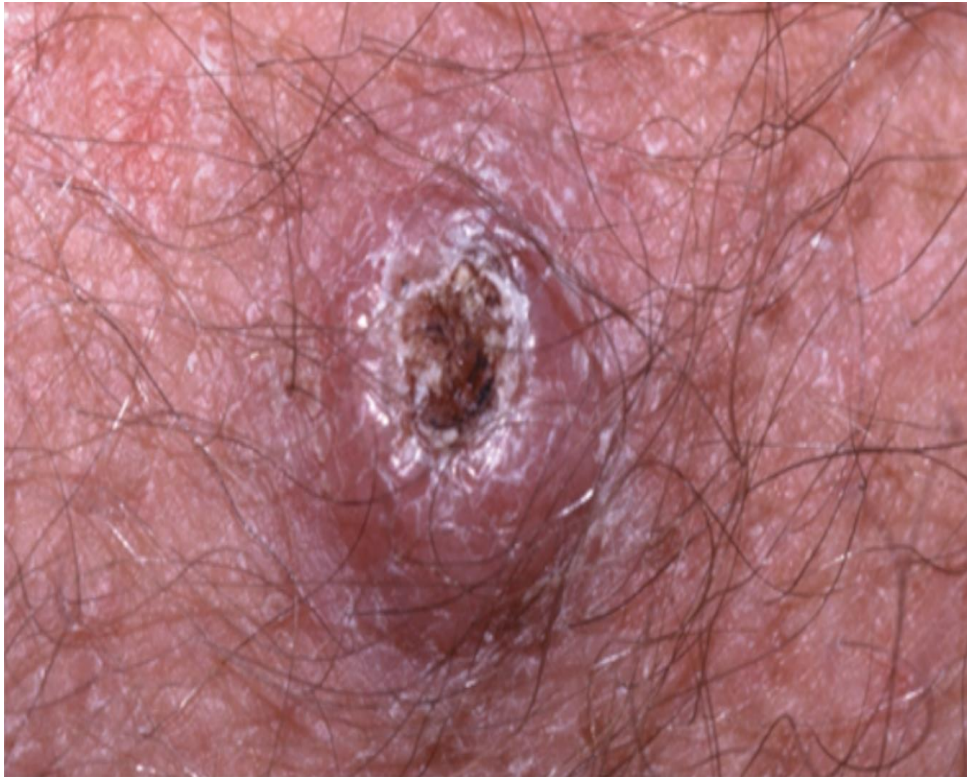
2. Non-Melanoma Skin Cancers

-Basal cell carcinoma



2. Non-Melanoma Skin Cancers

-Squamous Cell Carcinoma



Marjolin's ulcer I



Marjolin's ulcer II



Predisposition to developing skin cancer by wound Type:

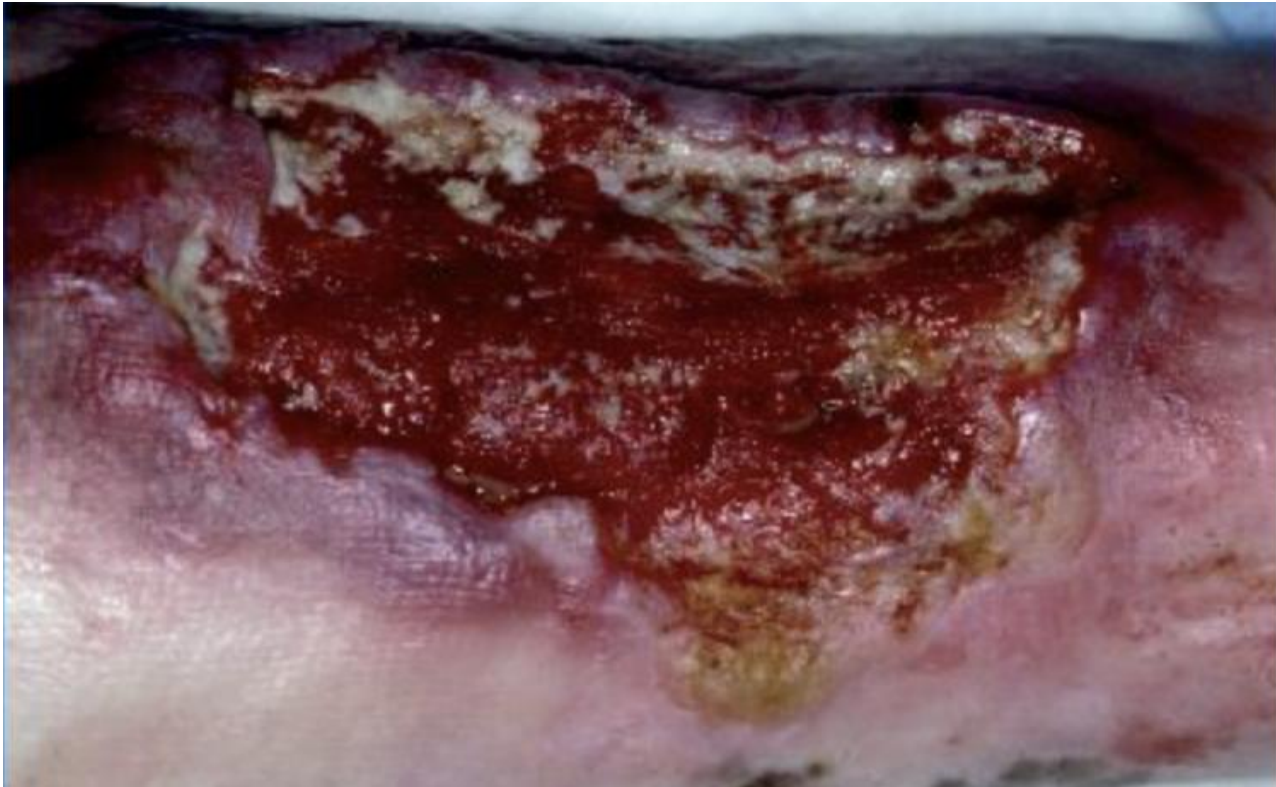
-Diabetic foot ulcers



Pressure ulcers



-Venous ulcers



Trauma



Other examples of skin cancers

Ulcerated amelanotic melanoma



Basal cell carcinoma



Basal cell carcinoma



nodular ulcerated basal cell cancers (1)

Stephen Hayes©

Amelanotic malignant melanoma



Amelanotic malignant melanoma misdiagnosed as a diabetic foot ulcer



When to biopsy?

- no response to appropriate treatment
- raised borders? Crusting?
- Organ Tx patient,
immunosuppressed
- chronic sun exposure